



## AVK SUPA® STEP COUPLING, PN16

602/1-001

Sheraplex coated 8.8 bolts/nuts, WRAS approved EPDM sealings



AVK Supa® is a range of universal straight couplings, step couplings and flange adaptors for cast iron, ductile iron, steel, uPVC and asbestos cement pipes. Supa® couplings are easy to mount due to the anti-friction coated bolts and nuts and the possibility of up to  $\pm 4^\circ$  angular deflection. The stainless steel bolts and nuts and the high quality coating offer a durable corrosion protection.



### Product description:

Universal Supa® step coupling, grade 8.8 bolts, for drinking water and neutral liquids to max. 70°C

### Test/Approvals:

- Hydraulic test according to EN14525
- WRAS approved materials



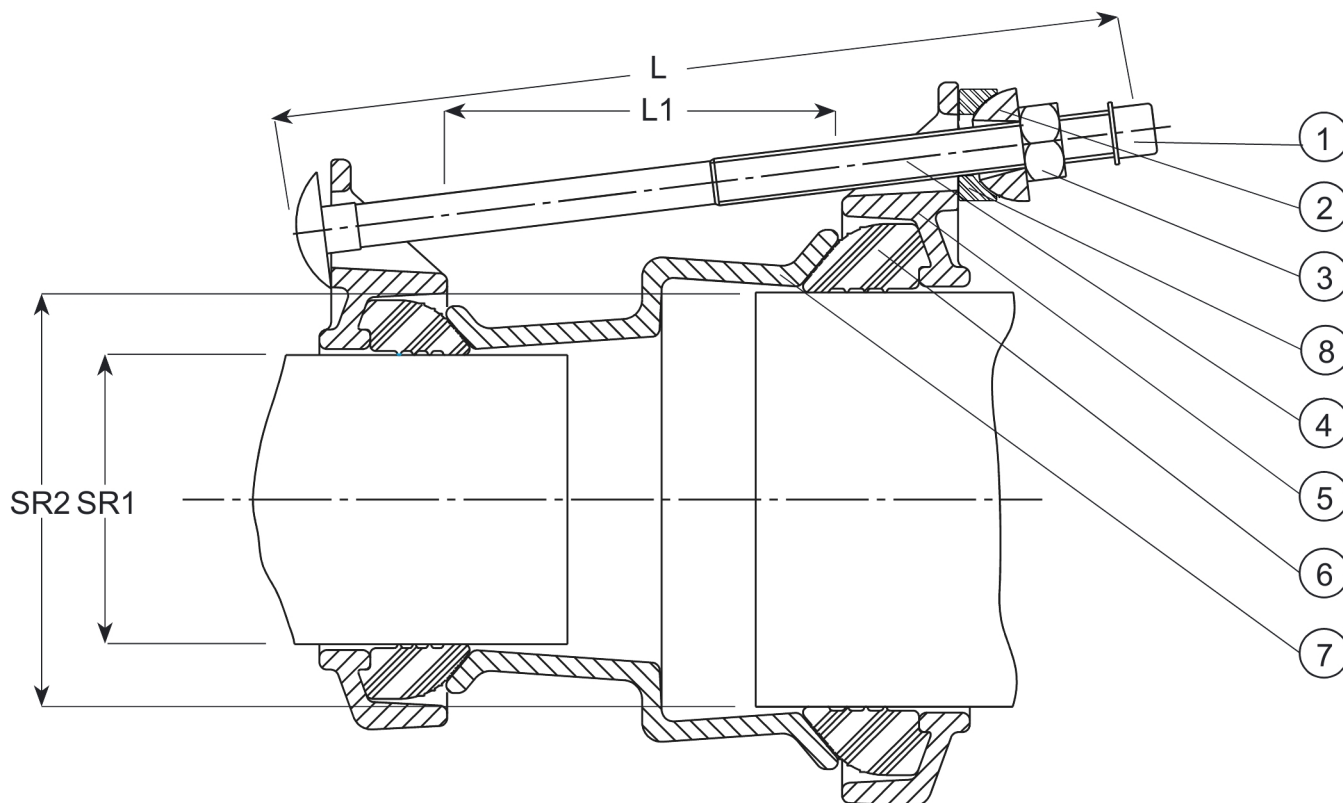
### Features:

- $\pm 4^\circ$  angular deflection
- Drinking water approved EPDM gasket
- Bolts of anti-friction coated grade 8.8 offer easy tightening and prevent galling
- The bolt ends are protected with plastic caps
- The moulded ribs in the gasket absorb minor imperfections in the pipe
- Versatile design tolerances typical 26 mm to cover all pipe materials
- Fusion bonded epoxy coating to DIN 3476-1 and EN 14901, GSK approved



Expect ... **AVR**

The designs, materials and specifications shown are subject to change without notice due to the continuous development of our product range.



**Component list:**

1. Protection cap	Plastic	5. Gland ring	Ductile iron GJS-450-10
2. Washer	Steel, galvanized	6. Gasket	EPDM rubber
3. Nut	Steel gr. 8, Sheraplex coated	7. Centre sleeve	Ductile iron GJS-450-10
4. Bolt	Steel gr. 8.8, Sheraplex coated	8. Washer	Steel, galvanized

Components may be substituted with equivalent or higher class materials without prior notification.

**Reference nos. and dimensions:**

Ref. No.	DN/DN	Seal range SR1 mm	Seal range SR2 mm	L mm	L1 mm	Theoretical weight/kg
602-063-074-4100	40 - 50	46-63	57-74	210	100	3.2
602-063-085-4100	40 - 65	46-63	68-85	210	100	4.2
602-074-085-4100	50 - 65	57-74	68-85	210	100	4.2
602-074-106-4100	50 - 80	57-74	84-106	210	100	4.5
602-085-106-4100	65 - 80	68-85	84-106	210	100	4.9
602-106-119-4100	80 - 100	84-106	99-119	210	100	5.3
602-106-133-4100	80 - 100	84-106	109-133	210	100	5.3
602-119-133-4100	80 - 100	99-119	109-133	210	100	5.6
602-119-157-4100	80 - 125	99-119	132-157	210	100	6.4
602-133-157-4100	100 - 125	109-133	132-157	210	100	7.2
602-133-183-4100	100 - 150	109-133	157-183	230	115	7.4
602-157-183-4100	125 - 150	132-157	157-183	230	115	7.7
602-183-201-4100	150 - 150	157-183	176-201	230	115	10
602-201-215-4100	150 - 175	176-201	193-215	230	115	9.6
602-201-242-4100	175 - 200	176-201	218-242	250	140	14
602-215-242-4100	175 - 200	193-215	218-242	250	140	11
602-215-268-4100	175 - 225	193-215	242-268	250	140	16
602-242-268-4100	200 - 225	218-242	242-268	250	140	14
602-268-292-4100	225 - 250	242-268	266-292	270	160	15
602-292-306-4100	250 - 300	266-292	280-306	270	160	20
602-292-327-4100	250 - 300	266-292	301-327	270	160	20
602-327-350-4100	300 - 300	301-327	324-350	270	160	17

The designs, materials and specifications shown are subject to change without notice due to the continuous development of our product range.

**Reference nos. and dimensions:**

Ref. No.	DN/DN	Seal range SR1 mm	Seal range SR2 mm	L mm	L1 mm	Theoretical weight/kg
602-327-378-4100	300 - 350	301-327	352-378	270	160	19
602-350-378-4100	300 - 350	324-350	352-378	270	160	20
602-378-396-4100	350 - 350	352-378	372-397	270	160	26
602-396-410-4100	350 - 400	372-397	384-410	270	160	26
602-410-436-4100	400 - 400	384-410	410-436	270	160	22
602-436-462-4100	400 - 400	410-436	436-462	270	160	23