



## AVK DOUBLE ECC. BUTTERFLY VALVE, LONG, PN25

756/118-002

IP67 gearbox w. handwheel/pos. ind., SS-shaft, intgr. seat, A2 fasteners

AVK double eccentric butterfly valves with tilted disc are designed for easy operation and long service life. The disc seal is made of AVK's drinking water approved EPDM rubber featuring an excellent compression set and ability to regain the original shape. The high quality epoxy coating and fully encapsulated shaft/disc connection ensure optimal corrosion protection and durability

### Product description:

Double eccentric butterfly valve to EN 593 for neutral liquids like drinking water and treated waste water free from solids and fibrous impurities to max 70°C.

### Design standards:

- EN 593
- Face-to-face dimension according to EN 558 Table 2 Basic Series 14
- Flange drilling EN1092, PN25

### Test/Approvals:

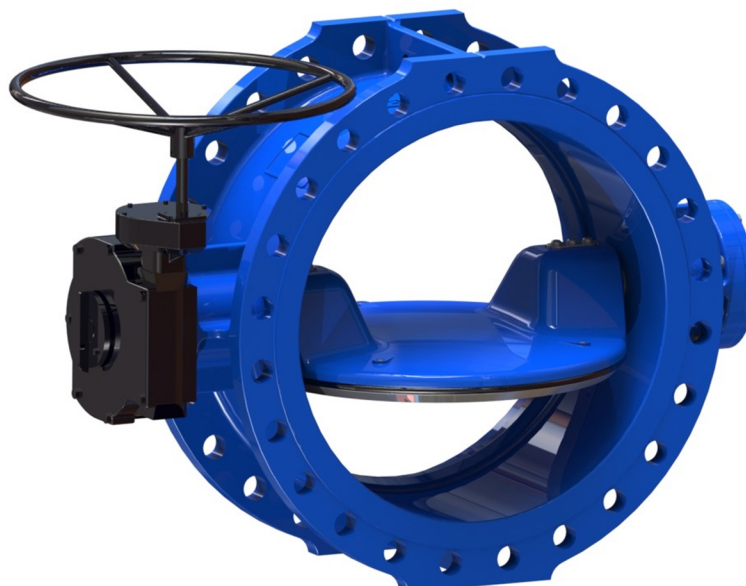
- Hydraulic test according to EN 1074-1 and 2 / EN 12266
- Approved according to ACS-France
- Approved for drinking water
- ISO 9001 certified - SAI Global Quality
- ISO 14001 certified - SAI Global Environment

### Features:

- Double eccentric design releases seal compression after only few degrees of opening resulting in low operating torque
- Disc firmly fixed to the shaft to prevent fluttering and a slight tilt allows for precise adjustment of the closed position
- Disc seal profile and rubber quality ensure low closing torque
- All rubber parts drinking water approved by multiple institutes
- Fasteners in stainless steel, A2
- Stainless steel shaft
- Machined and epoxy coated ductile iron seat integrated in the body
- All threaded connections are sealed with O-rings for protection against medium and environment
- Radial bearings in self-lubricating PTFE/bronze composite
- Shaft ends DN≤600 fitted with an end cover that keeps the shaft in position against system pressure and seals the disc interior against corrosion
- Shaft ends DN≥700 fully encapsulated in the disc and fixed with O-ring sealed dowels held in place with a security plate. Key and keyway as backup
- Replaceable shaft seals with two EPDM O-rings; gaskets to the exterior in hydrocarbon resistant NBR
- Coated with blue RAL 5017 FBE to DIN 3476, GSK and approved by WRAS-DVGW/W270/UBA, 250µm

### Accessories:

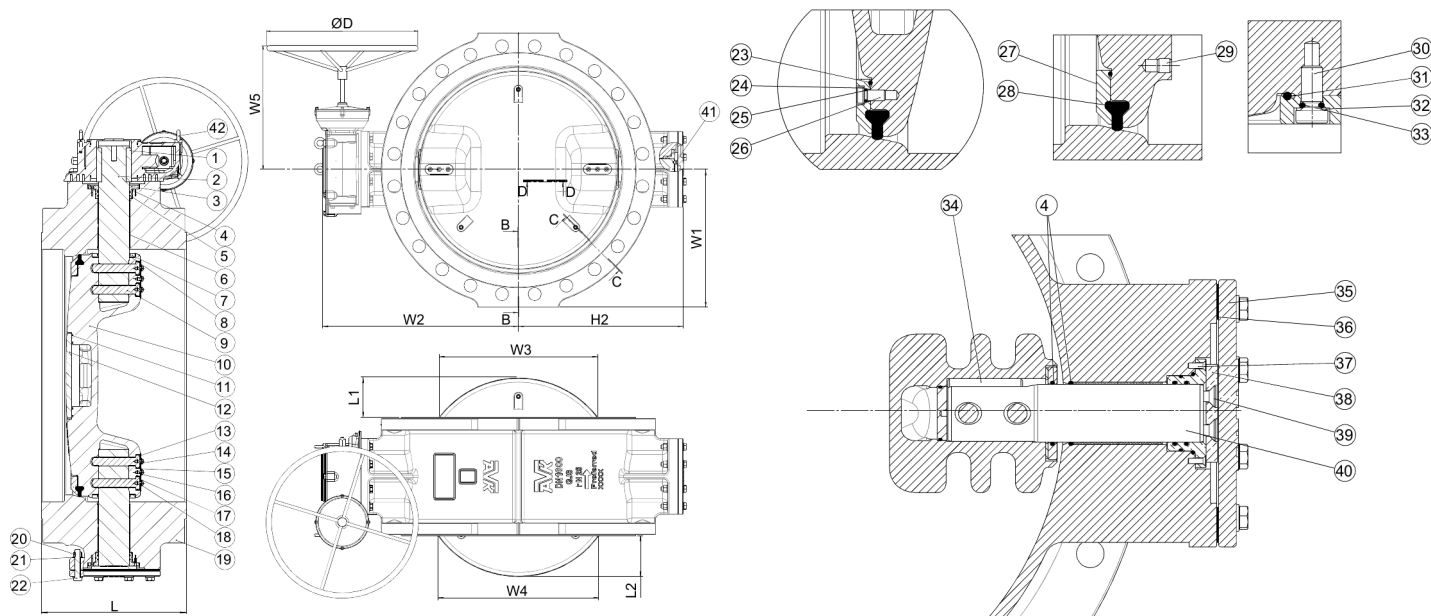
Extension spindle, street cover, dismantling joint, flange adaptor



Expect ... **AVR**



The designs, materials and specifications shown are subject to change without notice due to the continuous development of our product range.



**Component list:**

|                             |                                 |                        |                                 |
|-----------------------------|---------------------------------|------------------------|---------------------------------|
| 1. Key                      | Stainless steel A2              | 22. Bolt               | Stainless steel A2              |
| 2. Shaft, drive             | Stainless steel AISI 420        | 23. O-ring             | EPDM rubber                     |
| 3. Seal housing             | Bronze                          | 24. Washer             | Stainless steel A2              |
| 4. O-ring                   | EPDM rubber                     | 25. O-ring             | EPDM rubber                     |
| 5. O-ring                   | EPDM rubber                     | 26. Bolt               | Stainless steel A2              |
| 6. Self-lubricating bearing | Bronze/PTFE composite           | 27. Seal retainer ring | Steel                           |
| 7. Disc cover               | Stainless steel                 | 28. Disc seal          | EPDM rubber                     |
| 8. Disc cover gasket        | EPDM rubber                     | 29. Screw              | Stainless steel A2              |
| 9. Dowel                    | Stainless steel                 | 30. Bolt               | Stainless steel A2              |
| 10. Disc                    | Ductile iron GJS-500-7 (GGG-50) | 31. O-ring             | EPDM rubber                     |
| 11. O-ring                  | EPDM rubber                     | 32. Washer             | Stainless steel A2              |
| 12. Centre flange           | Ductile iron GJS-500-7 (GGG-50) | 33. O-ring             | EPDM rubber                     |
| 13. Security plate          | Stainless steel                 | 34. Safety key         | Stainless steel A2              |
| 14. Screw                   | Stainless steel A2              | 35. End plate          | Ductile iron GJS-500-7 (GGG-50) |
| 15. O-ring                  | EPDM rubber                     | 36. Gasket             | EPDM rubber                     |
| 16. Spring washer           | Stainless steel A2              | 37. Screw              | Stainless steel A2              |
| 17. Washer                  | Zinc                            | 38. Thrust bearing     | Bronze                          |
| 18. O-ring                  | EPDM rubber                     | 39. Screw              | Stainless steel A2              |
| 19. Body                    | Ductile iron GJS-500-7 (GGG-50) | 40. Shaft, stub        | Stainless steel AISI 420        |
| 20. Nut                     | Stainless steel A2              | 41. Screw              | Stainless steel A2              |
| 21. Washer                  | Stainless steel A2              | 42. Gearbox            | Cast iron                       |

Components may be substituted with equivalent or higher class materials without prior notification.

**Reference nos. and dimensions:**

| AVK ref. no.        | DN  | Flange | D   | L   | L1 | L2 | H2  | W1  | W2  | W3 | W4 | W5  | Theoretical weight/kg |
|---------------------|-----|--------|-----|-----|----|----|-----|-----|-----|----|----|-----|-----------------------|
| 756-0150-1-74018014 | 150 | PN25   | 250 | 210 | -  | -  | 192 | 162 | 254 | -  | -  | 277 | 39                    |

The designs, materials and specifications shown are subject to change without notice due to the continuous development of our product range.

**AVK DOUBLE ECC. BUTTERFLY VALVE, LONG, PN25****756/118-002****IP67 gearbox w. handwheel/pos. ind., SS-shaft, intgr. seat, A2 fasteners****Reference nos. and dimensions:**

| AVK ref. no.        | DN   | Flange   | D   | L   | L1  | L2  | H2  | W1  | W2   | W3  | W4  | W5    | Theoretical weight/kg |
|---------------------|------|----------|-----|-----|-----|-----|-----|-----|------|-----|-----|-------|-----------------------|
|                     | mm   | drilling | mm  | mm  | mm  | mm  | mm  | mm  | mm   | mm  | mm  | mm    |                       |
| 756-0200-1-74018014 | 200  | PN25     | 250 | 230 | -   | -   | 223 | 190 | 288  | -   | -   | 277   | 57                    |
| 756-0250-1-74018014 | 250  | PN25     | 400 | 250 | -   | -   | 268 | 223 | 333  | -   | -   | 306   | 92                    |
| 756-0300-1-74018014 | 300  | PN25     | 400 | 270 | 1   | 12  | 303 | 253 | 368  | 117 | 115 | 306   | 117                   |
| 756-0350-1-74018014 | 350  | PN25     | 400 | 290 | 19  | 25  | 331 | 288 | 393  | 155 | 176 | 306   | 151                   |
| 756-0400-1-74018014 | 400  | PN25     | 400 | 310 | 34  | 40  | 373 | 320 | 435  | 217 | 234 | 306   | 190                   |
| 756-0450-1-74018014 | 450  | PN25     | 600 | 330 | 48  | 54  | 411 | 345 | 503  | 270 | 285 | 461   | 258                   |
| 756-0500-1-74018014 | 500  | PN25     | 600 | 350 | 63  | 69  | 454 | 375 | 546  | 326 | 339 | 461   | 306                   |
| 756-0600-1-74018014 | 600  | PN25     | 700 | 390 | 92  | 98  | 541 | 430 | 632  | 425 | 436 | 449   | 484                   |
| 756-0700-1-74018014 | 700  | PN25     | 700 | 430 | 124 | 130 | 566 | 483 | 704  | 527 | 537 | 570   | 673                   |
| 756-0800-1-74018014 | 800  | PN25     | 700 | 470 | 155 | 161 | 650 | 546 | 789  | 626 | 635 | 570   | 874                   |
| 756-0900-1-74018014 | 900  | PN25     | 700 | 510 | 185 | 191 | 701 | 593 | 839  | 721 | 729 | 570   | 1134                  |
| 756-1000-1-74018014 | 1000 | PN25     | 700 | 550 | 216 | 222 | 771 | 663 | 909  | 813 | 824 | 570   | 1434                  |
| 756-1200-1-74018014 | 1200 | PN25     | 700 | 630 | 268 | 272 | 899 | 768 | 1044 | 982 | 987 | 630.5 | 2315                  |

The designs, materials and specifications shown are subject to change without notice due to the continuous development of our product range.