



## AVK ECCENTRIC PLUG VALVE, EN-STD. PN10/16

764/01-006

Flanged, gearbox w. handwheel and pos. indicator, for drinking water, EPDM rubber, A4 bolts

AVK eccentric plug valves are quarter turn with obstacle-free bore, adapted for pump control shut-off and throttling service with bi-directional flow in applications where waste water is contaminated with particles or hydrocarbon residues. The plug is fully vulcanized with AVK's own drinking water approved EPDM rubber compound which due to its sturdy design, double bonding vulcanization and the rubber's ability to regain its original shape features an outstanding durability. The valve seat is corrosion resistant, welded nickel with a full port design that allows for high flow capability, an ISO 5211 actuator flange is incorporated in the valve housing and fusion bonded epoxy coating protects internally and externally.

### Product description:

Resilient seated, quarter turn, eccentric plug valve with welded nickel seat, for drinking water and other neutral liquids to max. 70°C

### Design standards:

- AWWA C517, AWWA C507
- Face-to-face dimension according to EN 558 Table 2 Basic Series 3
- Flange drilling to EN1092, PN16

### Test/Approvals:

- Hydraulic tests according to DIN EN 1074-1 and 5, cover:1.1×PN, body:1.5×PN

### Features:

- Quarter turn with no shaft through the bore gives a quickly operated valve that is not clogged by stringy or fibrous objects in the water
- Seat in 95% nickel, welded on the cast body for corrosion protection and extended life time
- Round rubber bonnet gasket that fits into a groove in the valve bonnet preventing it from being blown out by pressure surges
- Bonnet gasket and plug rubber in drinking water approved EPDM
- Bonnet bolts in stainless steel A4-70, encircled by the bonnet gasket and sealed with hot melt
- Fusion bonded epoxy coating to DIN 3476, GSK approved, blue RAL 5017
- V-type stem seal packing, easily adjustable during use
- Self-lubricating, stainless steel backed, PTFE coated, bronze bearing along with upper and lower bronze washers ensures consistently low operating torque
- Actuator mounting flange to ISO 5211
- Rectangular port opening, full port area
- Flange feet on large sizes for easy transport
- Seals from both directions up to 16 bar
- Plugs with integrated stems
- Plug stem extensions with zinc plating for corrosion protection
- Main stem seal and bearings are protected from particles and grit in the liquid by a triple lip integrated in the plug rubber coat pressing against the inside of the thrust bearing. Parallel to that an O-ring also seals the outside of the thrust bearing and the inside of the radial bearing

### Accessories:

Gearbox, electric actuator

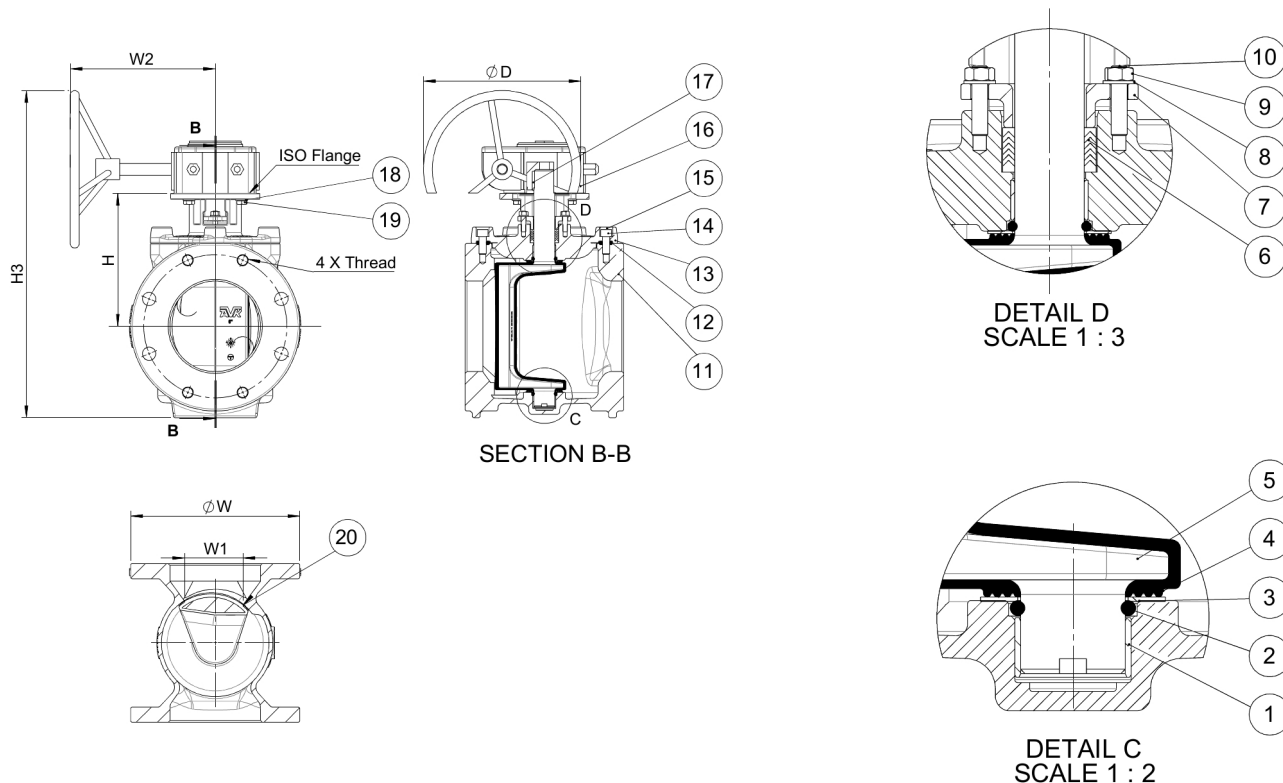


Expect ... **AVR**

# AVK ECCENTRIC PLUG VALVE, EN-STD. PN10/16

764/01-006

Flanged, gearbox w. handwheel and pos. indicator, for drinking water, EPDM rubber, A4 bolts



## Component list:

1. Bearing	Bronze/PTFE composite	11. Body	Ductile iron GJS-450-10
2. O-ring	EPDM rubber	12. Bonnet gasket	EPDM rubber
3. Thrust washer	Bronze CC499K	13. Bonnet	Ductile iron GJS-450-10
4. Plug rubber	EPDM rubber	14. Bolt	Stainless steel A4-70
5. Plug core	Ductile iron GJS-450-10	15. Cover	Hot melt glue
6. V-pack	EPDM rubber	16. Gearbox	Cast iron
7. Gland	Ductile iron GJS-450-10	17. Key	Stainless steel A4-70
8. Washer	Stainless steel A4-70	18. Washer	Stainless steel A4-70
9. Nut	Stainless steel A4-70	19. Bolt	Stainless steel A4-70
10. Thread rod	Stainless steel A4-70	20. Seat	Nickel

Components may be substituted with equivalent or higher class materials without prior notification.

## Reference nos. and dimensions:

Ref. No.	DN	Flange	L	D	W	W1	W2	H3	H	Actuator	Theoretical
	mm	drilling	mm	mm	mm	mm	mm	mm	mm	flange	weight/kg
764-065-01-1406400020	65	PN16	190	125	180	37	174	360	172	F07	20
764-080-01-1406400020	80	PN16	203	250	200	57	174	361	170	F07	23
764-100-01-1406400020	100	PN16	229	250	230	69	277	473	190	F10	39
764-150-01-1406400020	150	PN16	267	400	285	99	297	620	224	F10/12	53
764-200-01-1406400020	200	PN16	292	500	345	107	327	829	309	F14	93
764-250-01-1406400020	250	PN16	330	700	405	135	347	1043	367	F14/16	139
764-300-01-1406400020	300	PN16	356	700	485	152	462	1162	419	F14/16	195

The designs, materials and specifications shown are subject to change without notice due to the continuous development of our product range.